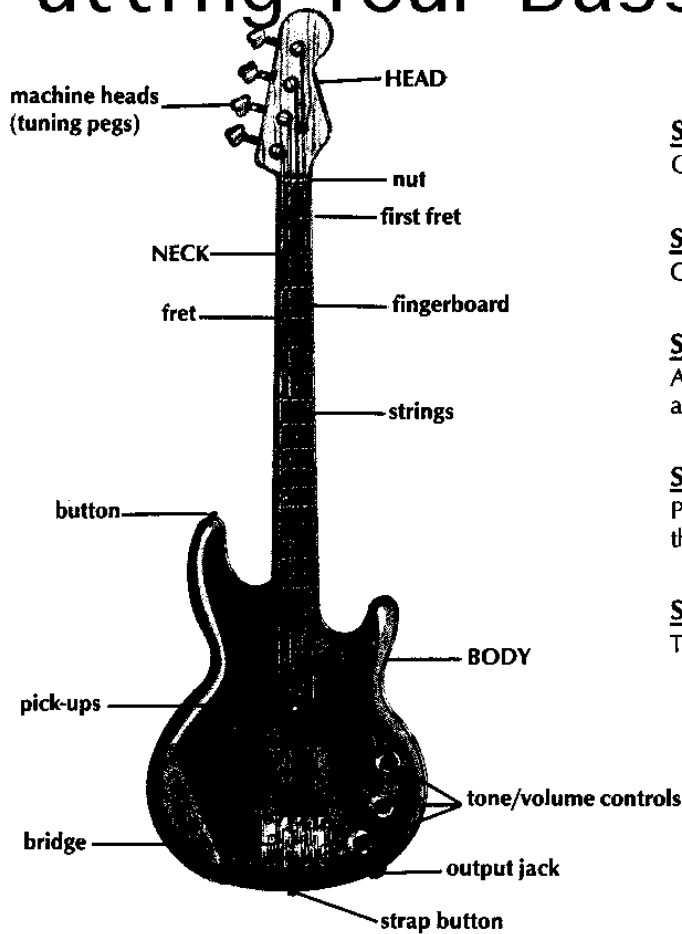


# Putting Your Bass Together



## **STEP 1**

Open your case right side up.

## **STEP 2**

Connect the strap securely to the strap buttons.

## **STEP 3**

Adjust the strap so that the body of the bass rests at or above your waist.

## **STEP 4**

Plug the audio cable into your bass, and then plug the cable into your amplifier.

## **STEP 5**

Turn the amplifier on and adjust the volume.

# PREPARING TO PLAY



## **STEP 1**

Sit or stand up straight, with your shoulders relaxed.

## **STEP 2**

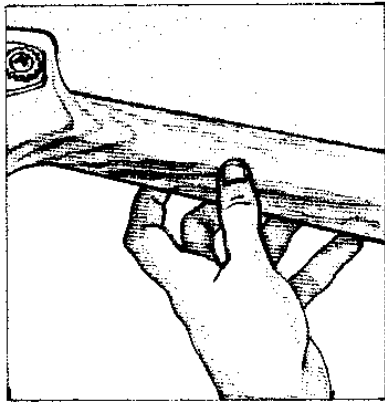
When standing, the strap should support the full weight of the bass. When sitting, rest the curve of the bass on your right thigh, and the back of the bass against your body.

## **STEP 3**

Bend your right elbow and position your forearm and wrist over the front of the bass. Your hand should be positioned toward the ground, with your fingers curved toward the strings.



# PREPARING TO PLAY

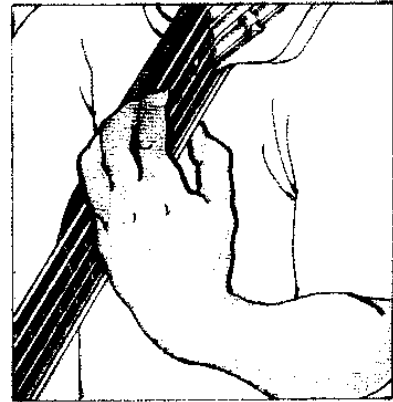


## **STEP 4**

Place your left hand thumb behind the neck. Your thumb should not curl over the top of the neck onto the fingerboard.

## **STEP 5**

Bend your left wrist to position your fingers over the fingerboard. Arch your fingers, keeping your palm clear of the neck. Your thumb and fingers should form a "C" shape.



# PLAYING YOUR ELECTRIC BASS

## **STEP 1**

Place your right hand midway between the bridge and the end of the fingerboard.

## **STEP 2**

Rest your right hand thumb on the 4th string (E string). This is the string furthest from the ground. Keep your right hand fingers curved and relaxed while bending your wrist slightly.

## **STEP 3**

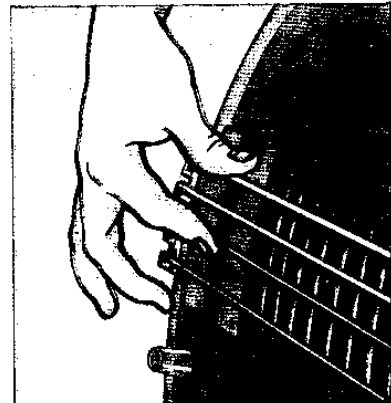
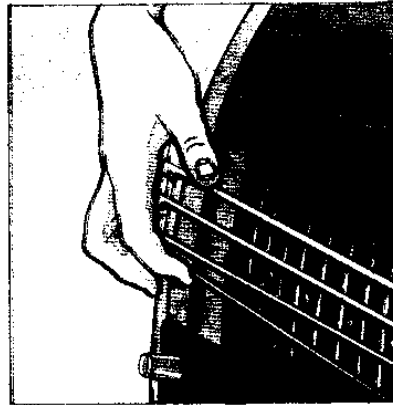
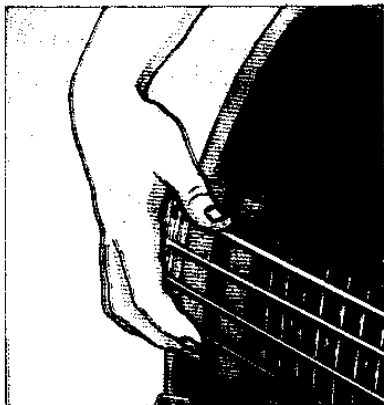
Place the pad of your right hand index finger against the first string (G string). This is the string nearest the ground.

## **STEP 4**

Sound the string by pulling your index finger across the string toward your thumb. Allow the finger to come to rest against the next string.

## **STEP 5**

Repeat steps 3 and 4 with your middle finger. Your index and middle fingers should produce the same sound when plucking the string.



# CARING FOR YOUR ELECTRIC BASS

## **STEP 1**

Turn your amplifier off before unplugging the audio cable from the amplifier.

## **STEP 2**

Wipe the strings and neck with a soft, lint-free cloth after playing to remove dirt and oil.

## **STEP 3**

Store your bass in its case, making sure fasteners are secured.

# FOR ELECTRIC BASSES ONLY

**BASS  
CLEF**



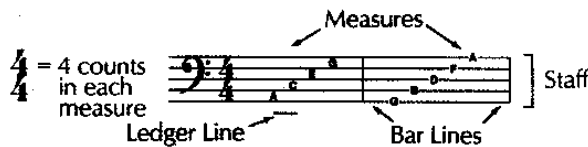
**TIME  
SIGNATURE**



**WHOLE  
NOTE**

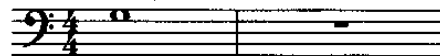


**WHOLE  
REST**



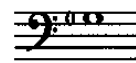
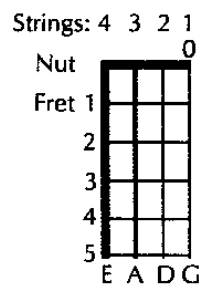
A whole note gets  
4 counts in  $\frac{4}{4}$  time.

A whole rest gets  
4 counts in  $\frac{4}{4}$  time.



## FINGERBOARD DIAGRAM

A fingerboard diagram shows where to finger new notes. It illustrates a fingerboard with the head pointing upward. A small "0" above a string or next to a notehead indicates open string.



G is played  
on the first  
open string.

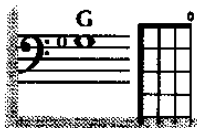
## RIGHT HAND TECHNIQUE

i = index  
m = middle

Your first two fingers  
(index and middle)  
pluck the strings.

## 1 THE G STRING

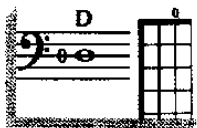
Page 39



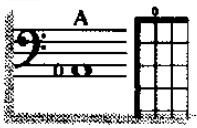
► A double bar line marks the end of the music.

- On the rests, use the finger shown in gray to stop the vibration of the string you just played. This is called *dampening* a string.
- When you see a page number followed by an arrow, *Excellerate* to the page indicated for additional studies.

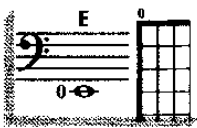
## 2 THE D STRING



## 3 THE A STRING



## 4 THE E STRING



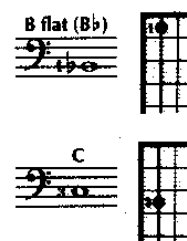
- After plucking the open E string, allow your finger to rest against your thumb. Do not rest your thumb on the E string after striking it.

## FLAT



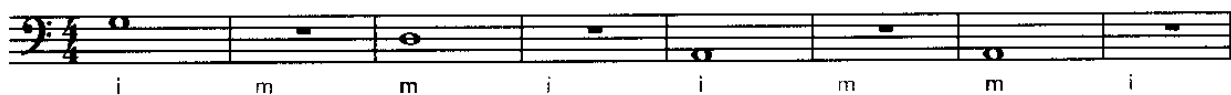
A flat (b) lowers the pitch of a note one half step. It remains in effect for the entire measure.

## FINGERBOARD DIAGRAM

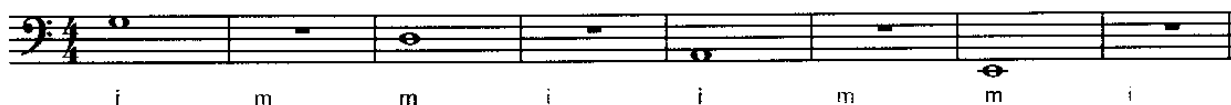


A number next to a note or a dot on the diagram shows you where to place your left hand finger to play a note.

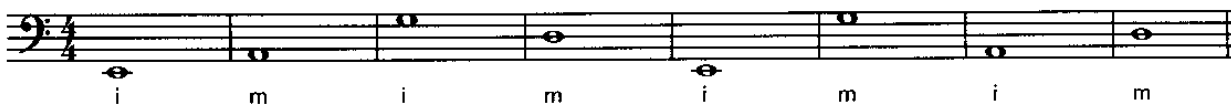
### 5 THREE STRING TUNE



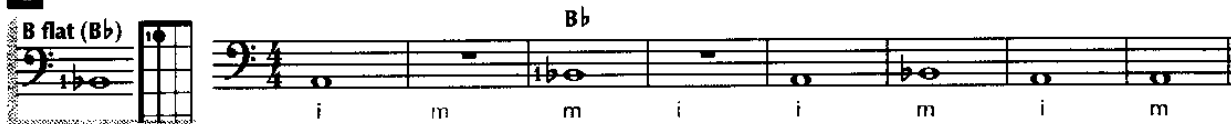
### 6 ALL FOUR



### 7 LOW AND HIGH



### 8 TIME TO FRET



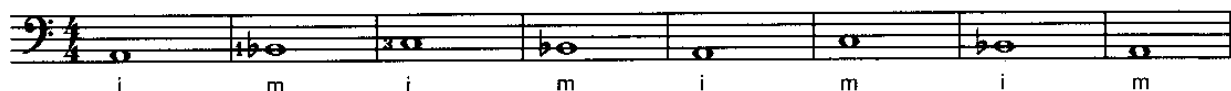
► To play Bb, press down the third string firmly with the tip of your left hand first (index) finger.

### 9 MORE FRETTING AROUND



► To play C, press down the third string firmly with the tip of your left hand third finger.

### 10 THIRD STRING SONG



► Press with your left hand and pluck with your right hand at the same time.

### 11 THREE TO GET READY

